



# External Flood Emergency Preparedness Manual

[www.mvc.on.ca](http://www.mvc.on.ca)

613-253-0006

info@mvc.on.ca

March, 1983  
Revision # 40 – February, 2023

**DISCLAIMER**

This Flood Emergency Preparedness Plan has been produced and distributed exclusively for Mississippi Valley Conservation Authority (MVCA) staff and external stakeholders. Distribution or use by anyone else is strictly prohibited. The MVCA disclaims any and all liability for any consequences which may result from the unauthorized reproduction, unauthorized use or improper use of this document in whole or in part.

---

**This document contains confidential information including the home/cell phone numbers of MVCA staff, government emergency officials and key stakeholders. Please do not release this document, or any information in it.**

---

## **TABLE OF CONTENTS**

|  |   |
|--|---|
| 1.0 Purpose                                    | 1 |
| 2.0 Responsibilities                           | 2 |
| 2.1 Conservation Authority                     | 2 |
| 2.2 Municipalities                             | 3 |
| 2.3 Ministry of Natural Resources and Forestry | 3 |
| 3.0 Flood Warning System                       | 4 |
| 3.1 Causes of Floods                           | 4 |
| 3.2 Flood Prone Areas                          | 4 |
| 3.3 Flood Forecasting System                   | 5 |
| 3.4 Ottawa River Regulation Planning Board     | 6 |
| 4.0 Flood Messages                             | 6 |
| 4.1 Normal                                     |   |
| 4.2 Water Safety Statement                     | 6 |
| 4.3 Flood Outlook Statement                    | 6 |
| 4.4 Flood Watch                                | 7 |
| 4.5 Flood Warning                              | 7 |
| 4.5 Distribution Procedures for Messages       | 7 |

## **TABLE OF APPENDICES**

| <b>TITLE</b>                                 | <b>APPENDIX</b> |
|--|-----------------|
| MVCA FLOOD WARNING AND RESPONSE COORDINATION | I               |
| CLASSIFICATION OF FLOOD EVENTS               | II              |
| EMERGENCY CONTACT LIST                       | III             |
| FLOOD PRONE AREAS                            | IV              |
| WATERSHED MAP                                | V               |

## 1.0 PURPOSE

This manual has been compiled to familiarize MVCA staff and member municipalities with the **MVCA Flood Forecasting and Warning Program. THIS MANUAL IS NOT A MUNICIPAL EMERGENCY PREPAREDNESS PLAN AND SHOULD NOT BE USED FOR THAT PURPOSE.**

The purpose of the Flood Forecasting and Warning Program is two-fold:

- 1) Minimize flood hazards through strategic dam operations and effective communications for advanced warning of expected flood conditions;
- 2) To outline levels of responsibility within the Program.

The procedures hereafter are guidelines for:

- a) Evaluation of a flood threat;
- b) Transmission of the warnings to municipalities and the public.

The **role** of the **MVCA** is to **act as an advisor when flooding is expected or occurring**. The **MVCA** continuously monitors streamflow and lake level data via an automated gauge network. This data is published provisionally on the MVCA's website in near real time. The MVCA will distribute and update forecasts to stakeholders and the general public as conditions require.

**THE MVCA IS NOT RESPONSIBLE TO PROVIDE OR INSTALL SANDBAGS OR OFFER ANY OTHER FLOOD PROTECTION TO PRIVATE OR PUBLIC PROPERTY. THE MVCA WILL OPERATE WATER CONTROL STRUCTURES TO MITIGATE FLOODING AS MANDATED IN THE MISSISSIPPI RIVER WATER MANAGEMENT PLAN.**

This plan is updated annually and distributed to the following stakeholders:

- a) All municipal clerks within the MVCA's jurisdiction;
- b) Ministry of Northern Development, Mines, Natural Resources and Forestry (NDMNRF) district offices in Kemptville, Bancroft and the Surface Water Monitoring Centre (SWMC) in Peterborough;
- d) O.P.P. offices at Kaladar, Sharbot Lake, Perth and Carleton Place;
- e) Adjacent Conservation Authorities (Rideau, South Nation, Cataraqui, Quinte, Crowe and Lower Trent);
- f) Ontario Power Generation;
- g) All hydroelectric generators on the Mississippi River System including Portage Power, Enerdu, Mississippi River Power Corporation;
- 1) Ministry of the Environment, Conservation and Parks Eastern Region;
- 2) Ottawa River Regulation Secretariat;
- 3) County of Lanark, Frontenac and Lennox & Addington;
- 4) Environment Canada;
- 5) MVCA board members and staff.

## **2.0 RESPONSIBILITIES**

### **2.1 CONSERVATION AUTHORITY**

- a. The MVCA shall maintain a flood forecasting and warning program.
- b. Flood forecasting is the primary responsibility of the MVCA. The Director, Engineering will implement the flood warning system, activate and manage the operations of the Flood Control Centre. The General Manager will fulfill these duties should the Director not be available.
- c. The MVCA will encourage and participate in the preparation and updating of Municipal Flood Emergency Plans.
- d. The MVCA will:
  - I) Maintain daily contact with Ontario Power Generation (OPG) to discuss forecasts, coordinate dam operations and develop water management strategies in alignment with the Mississippi River Water Management Plan (MRWMP);
  - II) Monitor the MVCA's automated gauge network, Water Surveys of Canada automated streamflow network, snow accumulation, and precipitation forecasts and data;
  - III) Review NDMNRF weather forecasts, snow survey data and bulletins;
- e. MVCA shall implement the flood warning system if:
  - I) Class 3 Flooding (as defined in Appendix II) is probable based on local conditions and forecasts; or
  - II) The Duty Officer receives a provincial alert from the Surface Water Monitoring Centre.
- f. If above average flooding is probable, the Director, Engineering will establish a Control Centre at the MVCA office in Carleton Place. The Duty Officers will remain on call and monitor conditions 24/7 until the flood danger has passed.
- g. The MVCA shall schedule a duty officer 7 days a week to monitor conditions. From March 1<sup>st</sup> to May 31<sup>st</sup> and during other periods high flow, the Duty Officer will be available during weekends and after hours.
- h. Provide an update to this manual before March 1<sup>st</sup> of each year.

## 2.2 MUNICIPALITIES

- a. Each municipality represented in this plan is expected to have a Municipal Flood Emergency Plan. The plan should identify:
  - The Municipal Flood Coordinator (MFC), the Community Emergency Management Coordinator (CEMC) and their roles during a flood emergency.
  - The roles of other levels of government and external partners during flood preparation and response, and a description of the relationships that exist between involved agencies and authorities.
  - Procedures to be followed for the development and dissemination of emergency information and public education that is accurate and coordinated with all other agencies.
  - The identification of priority municipal services and procedures to sustain these during a flood.
  - Areas that are historically prone to flooding.
  - Alternate emergency routes for flood prone areas.
  - Procedures for the distribution of sand and sandbags.
  - Procedures for primary and backup communications.
  - Inspections of flood prone areas not associated with major rivers or streams.
  - Inspections of areas on major rivers streams prone to ice jams.
  - The role of the MVCA and/or the NDMNRF.
- b. The MFC/CEMC shall work with the MVCA during a potential flood emergency to:
  - Initiate and coordinate the Municipal Flood Emergency Plan.
  - Ensure the MVCA's flood forecasting and warning communications are being disseminated within their municipality.
  - Share their staff's field observations with the MVCA.
  - Determine if municipal resources are adequate or if additional resources are required.
  - Recommend to the Head of Council that the municipality declare a state of emergency or request assistance.

## 2.3 THE MINISTRY OF NORTHERN DEVELOPMENT, MINES, NATURAL RESOURCES AND FORESTRY (NDMNRF)

- a. The responsibilities of the NDMNRF are outlined in the NDMNRF's Management Plan as required under the Emergency Management Act and Order in Council 1157/2009 which assigned NDMNRF lead ministry for forest fires, floods, drought/low water, dam failures, erosion and soil and bedrock instability.
- b. A provincial response will be ***in support*** of the emergency action undertaken by the municipality according to the Provincial Emergency Response Plan. All requests for this provincial response should be made by the Head of Council through the MVCA to the Provincial Emergency Operations Centre.

### **3.0 FLOOD WARNING SYSTEM**

One of the primary responsibilities of the MVCA is to provide flood warning to residents. The MVCA's flood forecasting program can trigger the flood warning system anytime conditions permit. When flooding conditions are less than or equal to average (Class 2 flooding as defined in Appendix II), the MVCA will provide watershed condition messages to the public, media and member municipalities via email. It is the responsibility of the FMC/CEMC to ensure this information is accounted at their municipality. The MVCA will maintain a duty officer for afterhours service before and during a Class 3 or higher flood.

#### **THE FLOOD WARNING SYSTEM WILL ONLY BE ACTIVATED WHEN ABOVE AVERAGE FLOODING IS FORECAST.**

### **3.1 Causes of Floods**

While some areas within the jurisdiction of the MVCA include development in the floodplain, other locations may experience flooding for various reasons including:

- a. Spring run-off (ie. the water resulting from the melting of snow and ice which has accumulated over the winter);
- b. Ice jams (ie. Ice sheets that become dislodged, blocking the flow of water).
- c. Frazil ice that occurs in open flowing water when air temperatures drop below -8°C and creates backwater conditions;
- d. Seasonal storms (ie. unexpected or unusually heavy rains and cause flooding of smaller tributaries).
- e. Most flooding in the Mississippi River watershed is the result of heavy continuous rainfall.

### **3.2 Flood Prone Areas**

The major flood prone areas (see Appendix IV) are as follows:

- Area 1 - Lanark Village
- Area 2 - Clyde River including Cedardale
- Area 3 - Crotch Lake/Snow Road/Dalhousie Lake
- Area 4 - Innisville and Mississippi Lake
- Area 5 - Town of Carleton Place, Glen Isle and Appleton
- Area 6 - Town of Mississippi Mills, Pakenham
- Area 7 - Carp River - Villages of Carp and Kinburn
- Area 8 - Ottawa River shoreline - mainly Constance Bay

Frazil ice forms in long stretches of open water during extreme cold. Historically, this occurs on the Mississippi River at Sheridan's Rapids, Playfairville, Ferguson's Falls, Innisville, Glen Isle, Appleton, Almonte and upstream of Pakenham. Due to the nature of frazil ice (limited structural strength, slush ice building from the bed of the river upwards, etc.) there are no readily available means to prevent, control or remove it.





### 3.4 Ottawa River Regulation Planning Board

The Ottawa River Regulation Planning Board (ORRPB) was formed in 1983 by the governments of Canada, Quebec, and Ontario to ensure integrated management of the principal reservoirs of the Ottawa River Basin. The goal of this integrated management is to minimize the impacts of floods and droughts along the Ottawa River and its tributaries, while maintaining the beneficial water uses such as hydro-electric energy production and preserving statutory or environmental levels and discharges in respect of other interests.

Forecasts for the Ottawa River are received from the Ottawa River Regulation Secretariat (the operational unit of the ORRPB). The MVCA will issue watershed conditions messages in coordination with the RVCA, SNC and the NDMNRF Kemptville District office for the Ontario side of the Ottawa River.

## 4.0 FLOOD MESSAGES

### 4.1 Normal

Conditions are within normal limits. No Flooding is expected.



### 4.2 Water Safety Statement

A Water Safety Statement is issued to provide notice to the general public of unsafe river conditions such as high flows, unsafe banks, melting ice or other factors that could be dangerous for recreational users such as anglers, canoeists, hikers, children, pets, etc. Flooding is not expected.



### 4.2 Flood Outlook

A **Flood Outlook** statement is issued to provide early notice of the potential for flooding based on weather forecasts calling for heavy rain, snow melt, high wind or other conditions that could lead to high runoff, cause ice jams, lakeshore flooding or erosion. The statement can consist of current levels and flows, snow conditions, weather forecasts, and a comparison of this data to previous events.



## 4.2 Flood Watch

A Flood Watch message will be issued when flooding is possible in specific watercourses or municipalities and the risk is less than or equal to a Class 2 Flood. Municipalities, emergency services and individuals in effected areas should monitor conditions as they develop.



A Flood Watch is issued prior to a Flood Warning and indicates that it is time to be prepared for a flood risk. The message will include current conditions, forecasts and expected outcomes. Municipalities should review their Flood Emergency Response Plan and monitor flood prone areas.

## 4.3 Flood Warning

A Flood Warning message is issued when flooding is imminent or already occurring in specific watercourses or municipalities. Municipalities and individuals should take action to deal with flood conditions. This may include road closures and evacuations. This message is issued when a serious flood (Class 3 or greater) is imminent due to heavy precipitation, high flows and/or full reservoirs.



Receipt of a Flood Warning message should initiate the Flood Emergency Response Plan. Once a Flood Warning message has been issued, it is the responsibility of the affected municipalities to combat the flooding. This includes sandbagging, evacuation, policing and everything else according to their Plan.

## 4.5 Distribution Procedures for Messages

The Flood Duty officer will issue all watershed conditions messages. The message will be emailed by communications staff to the FMC/CEMC, NDMNRF district offices and the SWMC, OPG, hydro producers on the lower Mississippi, local media, lake associations and the MVCA's email distribution list. It is the responsibility of the person receiving the message to relay it to the appropriate personnel at their organization. If email communications are not functioning, messages will be sent either by text or directly to the FMC/CEMC by phone.

## Appendix I – MVCA FLOOD WARNING AND RESPONSE COORDINATION

CONTROL CENTRE Telephone – 613-253-0006  
Fax Number – 613-253-0122  
Web Page – [www.mvc.on.ca](http://www.mvc.on.ca)

The Director, Engineering is responsible for determining if the Control Centre is to be activated at the office of the Mississippi Valley Conservation Authority, 10970 Highway 7, Carleton Place. Normally, the Control Centre will only be established if a Class 3 or greater flood is forecast. Email, telephone and 2-way radios will be the primary methods of communication. The operation of the Control Centre will be managed by the Director, Engineering.

Mississippi Valley Conservation Authority maintains a duty officer throughout the year. Between March 1<sup>st</sup> and May 31<sup>st</sup>, the Duty Officer is available 24/7 by calling the Control Center or their cell phone.

|                                       |   |                   |
|---------------------------------------|---|-------------------|
| <b>Director, Engineering</b>          | Juraj Cunderlik<br><a href="mailto:jcunderlik@mvc.on.ca">jcunderlik@mvc.on.ca</a> | 343-777-2507 Cell |
| Designated Alternate: General Manager | Sally McIntyre<br><a href="mailto:smcintyre@mvc.on.ca">smcintyre@mvc.on.ca</a>    | 613-619-0244 Cell |

### Duty Officer

|                              |  |                   |
|------------------------------|--|-------------------|
| Water Resources Technologist | Jennifer North<br><a href="mailto:jnorth@mvc.on.ca">jnorth@mvc.on.ca</a> | 613-850-0302 Cell |
|------------------------------|--|-------------------|

It is necessary to appoint alternates to ensure the availability of qualified personnel in the event of a flood emergency. Only the scheduled Duty Officer is authorized to issue watershed conditions messages or communicate with the media.

It is the responsibility of the Duty Officer to record the date, time, contact information and actions for all calls received. When interacting with stakeholders and the public, the Duty Officer will:

1. Identify themselves;
2. Provide a brief description of the Watch or Warning (when expected, duration, quantity of precipitation expected, etc.);
3. Record time and name of persons notified;
4. Record any action they are directed to take.

### **Technical Support**

|                      |  |                   |
|----------------------|--|-------------------|
| Engineer             | Bryan Flood<br><a href="mailto:bflood@mvc.on.ca">bflood@mvc.on.ca</a>            | 613-451-6160 Cell |
| Engineer             | Ramy Saadeldin<br><a href="mailto:rsaadeldin@mvc.on.ca">rsaadeldin@mvc.on.ca</a> | 905-394-0446 Cell |
| Full Stack Developer | Daniel Post<br><a href="mailto:dpost@mvc.on.ca">dpost@mvc.on.ca</a>              | 613-227-3425 Cell |

### **GIS Support**

|                                   |  |                                   |
|-----------------------------------|--|-----------------------------------|
| Information Technology Supervisor | Alex Broadbent<br><a href="mailto:abroadbent@mvc.on.ca">abroadbent@mvc.on.ca</a> | 613-256-6628<br>613-850-2901 Cell |
| GIS Specialist                    | Lauren Shupe<br><a href="mailto:lushupe@mvc.on.ca">lushupe@mvc.on.ca</a>         |                                   |

## **DAM OPERATORS**

There will be at least two dam operators on call at all times during an active FLOOD WATCH OR WARNING. The duty officer will contact the crew that is on call and notify the Field Operations Foreman when log operations are required through their MVCA cellular phones. When on call, operators are expected to regularly check their cellular phone. They may also be contacted through their home phone number.

While on call, dam operators will be ready to work at a moment's notice. They will have access to a reliable vehicle with all gear and personal protective equipment for operating the dams kept in that vehicle. Cell phones will remain charged and plugged in while driving and radios shall remain on at all times to provide constant communication with the Control Center.

The 2023 Dam Operators are:

| Title                    | Name          | Home         | Cell         |
|--------------------------|---------------|--------------|--------------|
| Field Operations Foreman | John Hendry   | 613-283-6284 | 613-850-0634 |
| Field Technician         | Rob King      | 613-264-8481 | 613-850-0648 |
| Field Technician         | Joe Arbour    | 613-259-5004 | 613-850-0697 |
| Field Technician         | Sarah Kirkham | 613-259-3102 | 613-894-1052 |
| Field Technician         | Carson James  |              | 613-805-1706 |

The Duty Officer may receive calls concerning areas outside the Authority's responsibility. Some of these areas and the appropriate agencies to contact are as follows:

### **POLLUTION** - including chemical spills

- EMERGENCY SPILLS ACTION CENTRE 1 800 268-6060
- MOECP 613-549-4000 (Kingston)  
613-521-3456 (Ottawa)

### **FISH AND WILDLIFE or FOREST FIRES**

- including possible legal infractions, rabid animals etc.
- including unauthorized burning
- flooding outside Mississippi Valley Conservation jurisdiction.
- Clayton Lake dam\*\*

**NDMNRF** 613-258-8204 (Kemptville)\*\*  
613-332-3940 (Bancroft)

## Appendix II – CLASSIFICATION OF FLOOD EVENTS

The scale of significant flood events is taken from the following table developed jointly between the Ministry of Natural Resources and Forestry and the Conservation Authorities.

| CLASS            | DESCRIPTION  |
|------------------|--|
| 0                | No flooding.   |
| 1 – NUISANCE     | Flooding in low lying areas.<br>No residential flooding.<br>Access routes are not disturbed.   |
| 2 – MINOR        | Some disruption of roads.<br>No evacuations.<br>Minor residential flooding such as some basement seepage or minor sewer backup.  |
| 3 – MAJOR        | Significant road damage.<br>Surface water in basements.<br>1st floor residential flooding.<br>Potential evacuation due to loss of services.  |
| 4 – SEVERE       | Major disruption to roads and services.<br>Many residences with 1st floor flooded.<br>Houses destroyed.<br>Evacuations.<br>Major risk to loss of life.<br>Industrial, commercial and agricultural damages. |
| 5 – CATASTROPHIC | Loss of life.<br>Community destruction.  |

## Appendix III – EMERGENCY CONTACT LIST

### Ontario Power Generation – Crotch Lake, High Falls – Dalhousie Lake.

| Name  | Office            | Cell         | Email  |
|---|-------------------|--------------|--|
| Brent Perrin  | 365-323-5852      |              | <a href="mailto:brent.perrin@opg.com">brent.perrin@opg.com</a>     |
| Laci Farczadi   | 289-271-9145      |              | <a href="mailto:Lajos.farczadi@opg.com">Lajos.farczadi@opg.com</a> |
| Ed Loghrin  | 705-653-1820 *360 | 613-602-3035 | <a href="mailto:edward.loghrin@opg.com">edward.loghrin@opg.com</a> |
| Niagara Operations Control Centre – Operator 24 hours/day |                   | 905-353-6402 |  |

### Portage Power – Appleton & Galetta Generation Stations

| Name                 | Title                      | Office       | Email  |
|----------------------|----------------------------|--------------|--|
| Murray Hall          | Manager Generation         | 613-382-7312 | <a href="mailto:murrayhall@energyottawa.com">murrayhall@energyottawa.com</a>             |
| Neil Findlay         | Facility Operator Galetta  | 613-859-0252 | <a href="mailto:neilfindlay@portagepower.com">neilfindlay@portagepower.com</a>           |
| Jeff Bretzlaff       | Facility Operator Appleton | 613-558-8480 | <a href="mailto:jeffreybretzlaff@portagepower.com">jeffreybretzlaff@portagepower.com</a> |
| Hydro Control Center |                            | 403-267-7500 |  |

### Mississippi River Power – Almonte

| Name         | Office   | Cell     | Email  |
|--------------|----------|----------|--|
| Scott Newton | 256-2403 | 447-9569 | <a href="mailto:snewton@mississippiriverpower.com">snewton@mississippiriverpower.com</a> |

### Enerdu – Almonte

| Name          | Office                 | Cell     | Email  |
|---------------|------------------------|----------|--|
| Jarrett Davey |                        | 913-0508 |  |
| Jeff Cavanagh | (613) 257-2918         | 913-0507 | <a href="mailto:jeff@thomascavanagh.ca">jeff@thomascavanagh.ca</a>           |
| Ron Campbell  | (613) 257-2918 ext 226 | 293-2606 | <a href="mailto:rcampbell@thomascavanagh.ca">rcampbell@thomascavanagh.ca</a> |

### Surface Water Monitoring Centre

| Name         | Office       | Fax                 | Cell         | Email  |
|--------------|--------------|---------------------|--------------|--|
| Duty Officer | 705-755-5201 | 705-755-5038 / 5039 | 705-761-2044 | <a href="mailto:surface.water@ontario.ca">surface.water@ontario.ca</a> |

### Kemptville District Office

| Name           | Title                    | Office       | Cell         | Email  |
|----------------|--------------------------|--------------|--------------|--|
| John Boos      | District Supervisor      | 613-258-8222 | 613-285-5421 | <a href="mailto:john.boos@ontario.ca">john.boos@ontario.ca</a>           |
| Tracy Adams    | District Manager         | 613-847-5116 |              | <a href="mailto:tracy.adams2@ontario.ca">tracy.adams2@ontario.ca</a>     |
| Eric Robertson | IRM Technical Specialist | 613-314-1993 |              | <a href="mailto:eric.robertson@ontario.ca">eric.robertson@ontario.ca</a> |

### Bancroft District Office

| Name                         | Title                                  | Office       | Email  |
|------------------------------|--|--------------|--|
| Suzy Shalla                  | Acting District Manager                | 613-334-5054 | <a href="mailto:suzy.shalla@ontario.ca">suzy.shalla@ontario.ca</a>   |
| Nathan Hack                  | IRM Technical Specialist               | 613-202-1620 | <a href="mailto:nathan.hack@ontario.ca">nathan.hack@ontario.ca</a>   |
| Paul Finigan                 | Acting Resources Management Supervisor | 613-202-1364 | <a href="mailto:paul.finigan@ontario.ca">paul.finigan@ontario.ca</a> |
| Dawn Sucee                   | Resource Mgmt Coordinator              | 613-202-2182 | <a href="mailto:dawn.sucee@ontario.ca">dawn.sucee@ontario.ca</a>     |
| Bancroft District Office Fax |  | 613-332-0608 |  |

**Pembroke District Office**

| Name          | Title                        | Office       | Email  |
|---------------|------------------------------|--------------|--|
| Carl Thompson | IRM Technical Specialist     | 613-732-5584 | <a href="mailto:carl.thompson@ontario.ca">carl.thompson@ontario.ca</a> |
| Aaron Foss    | Resources Management Coordin |              | <a href="mailto:aaron.foss@ontario.ca">aaron.foss@ontario.ca</a>       |

**Peterborough Office**

| Name        | Title  | Office       | Email  |
|-------------|--|--------------|--|
| Brent Smith | Regional Emergency Management/Safety Coordinator | 705-761-3976 | <a href="mailto:brent.smith@ontario.ca">brent.smith@ontario.ca</a> |

**OFFICE OF THE FIRE MARSHALL AND EMERGENCY MANAGEMENT**

| Name                        | Title                          | Office       | Email  |
|-----------------------------|--------------------------------|--------------|--|
| Hayston Lam                 | Field Officer, Capital Sector  | 437-231-5395 | <a href="mailto:hayston.lam@ontario.ca">hayston.lam@ontario.ca</a>     |
| John Galea                  | GIS Analyst                    | 647-329-1197 | <a href="mailto:John.galea@ontario.ca">John.galea@ontario.ca</a>       |
| Andre Proteau               | Field Officer- Loyalist Sector | 647-328-1186 | <a href="mailto:andre.proteau@ontario.ca">andre.proteau@ontario.ca</a> |
| Toronto Headquarters (PEOC) |                                |              | 1-866-314-0472 (Duty Officer)  |

**MINISTRY OF THE ENVIRONMENT, CONSERVATION AND PARKS**

| Name                            | Title                     | Office         | Fax          | Email  |
|---------------------------------|---------------------------|----------------|--------------|--|
| Peter Taylor                    | Regional Director         | 613-548-6901   | 613-548-6911 | <a href="mailto:Peter.g.taylor@ontario.ca">Peter.g.taylor@ontario.ca</a> |
| Trevor Dagilis                  | Kingston District Manager | 613-548-6906   | 613-548-6920 | <a href="mailto:trevor.dagilis@ontario.ca">trevor.dagilis@ontario.ca</a> |
| Tracy Hart                      | Ottawa District Manager   | 613-866-1386   | 613-521-5437 | <a href="mailto:tracy.hart@ontario.ca">tracy.hart@ontario.ca</a>         |
| Spills Action Centre – 24 hours |                           | 1-800-268-6060 |              |  |

**MINISTRY OF TRANSPORTATION**

| Name            | Title                       | Office       | Email  |
|-----------------|-----------------------------|--------------|--|
| Herb Villneff   | Regional Director           | 705-493-1428 | <a href="mailto:Herb.villneff@ontario.ca">Herb.villneff@ontario.ca</a>     |
| Jason Buick     | Head, Marine Services       | 613-539-6814 | <a href="mailto:jason.buick@ontario.ca">jason.buick@ontario.ca</a>         |
| Mario Brule     | Head, Operational Services  | 613-449-0446 | <a href="mailto:mario.brule@ontario.ca">mario.brule@ontario.ca</a>         |
| Louis Tay       | Manager, Highway Operations | 613-748-5280 | <a href="mailto:Louis.Tay@ontario.ca">Louis.Tay@ontario.ca</a>             |
| Alison Cuconato | Regional Operations Officer | 613-449-3712 | <a href="mailto:alison.cuconato@ontario.ca">alison.cuconato@ontario.ca</a> |

**MINISTRY OF HEALTH**

| Name           | Title               | Office         | Email  |
|----------------|---------------------|----------------|--|
| Shannon Mooney | Senior Program Lead | 613-433-1632   | <a href="mailto:shannon.mooney@ontario.ca">shannon.mooney@ontario.ca</a> |
|                | Duty Officer        | 1-800-267-5887 |  |

**CANADIAN RED CROSS**

| Name                         | Office       |
|------------------------------|--------------|
| 24-7 Provincial Duty Officer | 416-209-0432 |
| 24-7 Regional Duty Pager     | 613-239-4590 |

**POLICE**

|   |                |
|---|----------------|
| Communication Centre – Emergency Only (OPP) | 1-888-310-1122 |
| Hearing Impaired                            | 1-888-310-1133 |
| OPP Perth Office                            | 613-267-2626   |
| OPP Carleton Place Office                   | 613-257-5610   |



**OTTAWA RIVER REGULATION SECRETARIAT**

| Name                               | Title              | Office            | Email  |
|------------------------------------|--------------------|-------------------|--|
| Manon Lalonde                      | Executive Engineer | 819-303-5886 * 10 | <a href="mailto:Manon.Lalonde@ottawariver.ca">Manon.Lalonde@ottawariver.ca</a>     |
| Andrew Liddiard                    | Senior Engineer    | 819-303-5886 * 11 | <a href="mailto:Andrew.liddiard@ottawariver.ca">Andrew.liddiard@ottawariver.ca</a> |
| Ottawa River Flows and Predictions | 1-888-621-0059     |                   |  |

**ENVIRONMENT CANADA**

| Name  | Title                              | Office       | Email  |
|---|------------------------------------|--------------|--|
| Ontario Warning Preparedness Meteorologist                    |                                    |              | <a href="mailto:msa-ontario-wpm@ec.gc.ca">msa-ontario-wpm@ec.gc.ca</a>   |
| Gerald Cheng  | Warning Preparedness Meteorologist | 416-705-4753 | <a href="mailto:Gerald.cheng@ec.gc.ca">Gerald.cheng@ec.gc.ca</a>         |
| Steven Flisfeder  | Warning Preparedness Meteorologist | 416-931-2813 | <a href="mailto:Steven.flisfeder@ec.gc.ca">Steven.flisfeder@ec.gc.ca</a> |
| Ontario Storm Prediction Centre (unlisted for emergency only) |                                    | 416-739-4420 |  |

**WATER SURVEYS OF CANADA**

| Name           | Title                             | Office       | Email  |
|----------------|-----------------------------------|--------------|--|
| David Paquette | Hydrometric Technologist          | 613-716-5167 | <a href="mailto:david.paquette@ec.gc.ca">david.paquette@ec.gc.ca</a> |
| Adam Dowler    | Hydrometric Technologist          | 613-894-9540 | <a href="mailto:adam.dowler2@ec.gc.ca">adam.dowler2@ec.gc.ca</a>     |
| Victor Au      | Hydrometric Operations Supervisor | 613-949-8291 | <a href="mailto:victor.au@ec.gc.ca">victor.au@ec.gc.ca</a>           |

**Rideau Valley Conservation Authority**

| Name           | Title  | Office        | Cell         | Email  |
|----------------|--|---------------|--------------|--|
| Brian Stratton | Manager, Engineering Services                        | 613-3571*1141 | 613-293-3246 | <a href="mailto:brian.stratton@rvca.ca">brian.stratton@rvca.ca</a> |
| Terry Davidson | Director, Watershed Science and Engineering Services | 613-3571*1107 | 613-223-2773 | <a href="mailto:terry.davidson@rvca.ca">terry.davidson@rvca.ca</a> |
| Diane Downey   | Director, Communications                             | 613-3571*1126 | 613-698-9453 | <a href="mailto:diane.downey@rvca.ca">diane.downey@rvca.ca</a>     |
| Justin Robert  | Hydrometric Data Coordinator                         | 613-3571*1194 | 613-286-8804 | <a href="mailto:Justin.robert@rvca.ca">Justin.robert@rvca.ca</a>   |
| Tyler Bauman   | Engineering Assistant                                | 613-3571*1154 | 416-627-2664 | <a href="mailto:Tyler.bauman@rvca.ca">Tyler.bauman@rvca.ca</a>     |

**Quinte Conservation**

| Name                        | Title                          | Office Ext.              | Cell         | Email  |
|-----------------------------|--------------------------------|--------------------------|--------------|--|
| Brad McNevin                | CAO                            | 103                      | 613-827-7289 | <a href="mailto:bmcnevin@quinteconservation.ca">bmcnevin@quinteconservation.ca</a>       |
| Paul McCoy                  | Planning & Regulations Manager | 108                      | 613-967-7236 | <a href="mailto:pmccoy@quinteconservation.ca">pmccoy@quinteconservation.ca</a>           |
| Christine Phillibert        | Water Resources Manager        | 130                      | 613-391-4042 | <a href="mailto:cphillibert@quinteconservation.ca">cphillibert@quinteconservation.ca</a> |
| Dave Eastcott               | Water Resource Technician      | 126                      | 613-921-2768 | <a href="mailto:deastcott@quinteconservation.ca">deastcott@quinteconservation.ca</a>     |
| Kirsten Geisler             | Communications Specialist      | 123                      | 613-847-1764 | <a href="mailto:kgiesler@quinteconservation.ca">kgiesler@quinteconservation.ca</a>       |
| <b>Office: 613-968-3434</b> |                                | <b>Fax: 613-968-8240</b> |              |  |

**Cataraqui Region Conservation Authority**

| Name   | Title                             | Office             | Cell         | Email  |
|--|-----------------------------------|--------------------|--------------|--|
| Shawn Fairbank   | Water Resources Technologist      | 613-546-4228 * 284 | 613-328-7109 | <a href="mailto:sfairbank@crca.ca">sfairbank@crca.ca</a> |
| Steve Knapton  | Operations Planning Co-ord.       | 613-546-4228 * 223 | 613-561-2280 | <a href="mailto:sknapton@crca.ca">sknapton@crca.ca</a>   |
| Mallory Wright   | Water Resources Technologist      | 613-546-4228 * 234 | 613-328-7133 | <a href="mailto:mwright@crca.ca">mwright@crca.ca</a>     |
| Andrew Schmidt   | Watershed Planning & Eng. Manager | 613-546-4228 * 244 | 613-561-8270 | <a href="mailto:aschmidt@crca.ca">aschmidt@crca.ca</a>   |
| <b>Email: <a href="mailto:floodduty@crca.ca">floodduty@crca.ca</a></b> |                                   |                    |              |  |

**Crowe Valley Conservation Authority**

| Name          | Title                 | Office       | Email  |
|---------------|-----------------------|--------------|--|
| Tim Pidduck   | General Manager       | 613-472-3137 | <a href="mailto:Tim.pidduck@crowevalley.com">Tim.pidduck@crowevalley.com</a> |
| Neil McConkey | Water Resources Tech. | 613-475-3137 | <a href="mailto:watertech@crowevalley.com">watertech@crowevalley.com</a>     |
|               |                       |              | Fax: 613-472-5516  |

**South Nation Conservation**

| Name           | Title                      | Office       | Cell         | Email  |
|----------------|----------------------------|--------------|--------------|--|
| Sandra Mancini | Managing Director          | 613-984-2948 | 613-551-3242 | <a href="mailto:smancini@nation.on.ca">smancini@nation.on.ca</a>   |
| Kat Watson     | Water Resources Specialist | 613-984-2948 | 343-803-3733 | <a href="mailto:kwatson@nation.on.ca">kwatson@nation.on.ca</a>     |
| Erin Thorne    | Communications Specialist  | 613-984-2948 | 613-551-7158 | <a href="mailto:sgutoskie@nation.on.ca">sgutoskie@nation.on.ca</a> |
| John Mesman    | Managing Director          | 613-984-2948 | 613-899-5341 | <a href="mailto:jmesman@nation.on.ca">jmesman@nation.on.ca</a>     |

**Lower Trent Conservation**

| Name                             | Title                            | Office                | Cell         | Email  |
|----------------------------------|----------------------------------|-----------------------|--------------|--|
| Gage Comeau                      | Regulation & Enforcement Officer | 613-394-3915 *<br>224 | 613-920-4115 | <a href="mailto:gage.comeau@ltc.on.ca">gage.comeau@ltc.on.ca</a>       |
| Rhonda Bateman                   | CAO/Secretary Treasurer          | 613-394-3915 *<br>212 | 705-255-2074 | <a href="mailto:rhonda.bateman@ltc.on.ca">rhonda.bateman@ltc.on.ca</a> |
| Duty Officer (Flood Events only) |                                  |                       | 613-848-4883 |  |

**City of Ottawa**

| Name            | Title  | Office                  | Cell         | Email  |
|-----------------|--|-------------------------|--------------|--|
| Beth Gooding    | Director of Public Safety Services, OEM/CEMC                   | 613-580-2424<br>* 25256 | 613-315-2943 | <a href="mailto:beth.gooding@Ottawa.ca">beth.gooding@Ottawa.ca</a>             |
| Andrew Lomas    | Project Office Program Manager / 2023 Spring Freshet Commander | 613-580-2424<br>* 27446 | 613-323-5669 | <a href="mailto:Andrew.Lomas@ottawa.ca">Andrew.Lomas@ottawa.ca</a>             |
| Lindsay Krapiec | Project & Program Officer / 2023 Spring Freshet Commander      | 613-580-2424<br>*30854  | 613-325-3205 | <a href="mailto:Lindsay.Krapiec2@ottawa.ca">Lindsay.Krapiec2@ottawa.ca</a>     |
| Dan Bissonnette | OEM Coordinator / 2023 Spring Freshet Lead                     | 613-580-2424<br>*23122  | 613-293-7645 | <a href="mailto:Daniel.Bissonnette@ottawa.ca">Daniel.Bissonnette@ottawa.ca</a> |
| Jamie Hvidsten  | OEM Coordinator / 2023 Spring Freshet Lead                     |                         | 613-875-4892 | <a href="mailto:Jamie.hvidsten@ottawa.ca">Jamie.hvidsten@ottawa.ca</a>         |
| Todd Pyper      | Prg Mgr, Office of Emergency Mgmt                              | 613-580-2424<br>*21577  | 613-806-4706 | <a href="mailto:Todd.Pyper@ottawa.ca">Todd.Pyper@ottawa.ca</a>                 |
| Darlene Conway  | Water Services / 2023 Spring Freshet Water Monitoring Unit     | 613-580-2424<br>*27611  | -            | <a href="mailto:Darlene.Conway@ottawa.ca">Darlene.Conway@ottawa.ca</a>         |
| Laurent Jolliet | Water Services / 2023 Spring Freshet Water Monitoring Unit     | 613-580-2424<br>*17149  | -            | <a href="mailto:Laurent.Jolliet@ottawa.ca">Laurent.Jolliet@ottawa.ca</a>       |

**Town of Carleton Place**

| Name              | Title                 | Office       | Cell             | Email  |
|-------------------|-----------------------|--------------|------------------|--|
| Stacey Blair      | Clerk                 | 613-257-6212 | 613-897-1109     | <a href="mailto:sblair@carletonplace.ca">sblair@carletonplace.ca</a>       |
| Toby Randell      | Mayor                 | 613-257-6206 | 613-608-4317     | <a href="mailto:trandell@carletonplace.ca">trandell@carletonplace.ca</a>   |
| Andrew Tennant    | Deputy Mayor          |              | 613-291-6093     | <a href="mailto:atennant@carletonplace.ca">atennant@carletonplace.ca</a>   |
| Diane Smithson    | C.A.O.                | 613-257-6255 | 613-229-5117     | <a href="mailto:dsmithson@carletonplace.ca">dsmithson@carletonplace.ca</a> |
| Guy Bourgon       | Director Public Works | 613-257-6209 | 613-451-5950     | <a href="mailto:gbourgon@carletonplace.ca">gbourgon@carletonplace.ca</a>   |
| General Inquiries |                       | 613-257-6200 | Fax 613-257-8170 |  |

**Town of Mississippi Mills**

| Name            | Title                                     | Office             | Cell         | Email  |
|-----------------|---|--------------------|--------------|--|
| Mike Williams   | CEMC/ Acting Fire Chief/Deputy Fire Chief | 613-256-2064 * 701 | 613-200-9403 | <a href="mailto:mwilliams@mississippimills.ca">mwilliams@mississippimills.ca</a> |
| Megan Cullen    | Admin. Assistant                          | 613-256-2064 * 703 | 613-250-2668 | <a href="mailto:fireadmin@mississippimills.ca">fireadmin@mississippimills.ca</a> |
| Christa Lowry   | Mayor                                     | 613-256-2064       | 613-816-1716 | <a href="mailto:clowry@mississippimills.ca">clowry@mississippimills.ca</a>       |
| Cory Smith      | Dir. Roads & Public Works                 | 613-256-2064 * 401 | 613-913-6857 | <a href="mailto:csmith@mississippimills.ca">csmith@mississippimills.ca</a>       |
| Ken Kelly       | C.A.O.                                    | 613-256-2064       | 613-805-6056 | <a href="mailto:kkelly@mississippimills.ca">kkelly@mississippimills.ca</a>       |
| Jeanne Harfield | Clerk                                     | 613-256-2064 * 202 | 613-299-9871 | <a href="mailto:jharfield@mississippimills.ca">jharfield@mississippimills.ca</a> |
| Casey Munro     | Deputy Clerk                              | 613-256-2064 * 203 |              | <a href="mailto:cmunro@mississippimills.ca">cmunro@mississippimills.ca</a>       |

**The Corporation of the Township of Central Frontenac**

| Name                                   | Title                | Office             | Cell         | Email  |
|--|----------------------|--------------------|--------------|--|
| Chris McDonough                        | CEMC/Fire Chief      | 613-279-2935 * 359 |              |  |
| Cathy MacMunn                          | Alt. CEMC/ Clerk     | 613-279-2935 * 222 | 613-279-2387 | <a href="mailto:cmacmunn@centralfrontenac.com">cmacmunn@centralfrontenac.com</a>       |
| Frances Smith                          | Mayor                | 613-473-0066       | 613-279-3144 | <a href="mailto:mayor_smith@centralfrontenac.com">mayor_smith@centralfrontenac.com</a> |
| Tyson Myers                            | Public Works Manager | 613-279-2935 * 262 | 613-449-9646 | <a href="mailto:tmyers@centralfrontenac.com">tmyers@centralfrontenac.com</a>           |
| Public Works Hotline: 613-279-2935 * 5 |                      |                    |              |  |

**Township of Addington Highlands**

| Name           | Title           | Office             | Home/Cell    | Email  |
|----------------|-----------------|--------------------|--------------|--|
| Casey Cuddy    | CEMC/Fire Chief | 613-391-3529       | 613-336-8135 | <a href="mailto:firechief@addingtonhighlands.ca">firechief@addingtonhighlands.ca</a>         |
| Henry Hogg     | Reeve           |                    | 613-336-0227 | <a href="mailto:henryh@sympatico.ca">henryh@sympatico.ca</a>                                 |
| Brett Reavie   | Road Supervisor | 613-336-2286 * 206 | 613-661-3706 | <a href="mailto:roadsandwaste@addingtonhighlands.ca">roadsandwaste@addingtonhighlands.ca</a> |
| Christine Reed | Clerk Treasurer | 613-336-2286 * 204 | 613-391-5325 | <a href="mailto:clerk@addingtonhighlands.ca">clerk@addingtonhighlands.ca</a>                 |
|                |                 | Fax 336-2847       |              |  |

**Township of Greater Madawaska**

| Name               | Title      | Office       | Home         | Cell         | Email  |
|--------------------|------------|--------------|--------------|--------------|--|
| Rob Weir           | Mayor      |              |              | 613-433-1313 | <a href="mailto:rweir@greatermadawaska.com">rweir@greatermadawaska.com</a>             |
| Chris Peters       | Fire Chief | 613-752-2296 |              |              | <a href="mailto:firechief@greatermadawaska.com">firechief@greatermadawaska.com</a>     |
| Allison Holtzhauer | CAO        | 613-752-2222 | 613-433-7812 | 613-717-2246 | <a href="mailto:aholtzhauer@greatermadawaska.com">aholtzhauer@greatermadawaska.com</a> |

Municipal Office: 613-752-2222

Fax 752-2617

**Township of Beckwith**

| Name               | Title                               | Office           | Home         | Cell         | Email  |
|--------------------|-------------------------------------|------------------|--------------|--------------|--|
| Enam Hoque         | CEMC/Planner                        | 613-257-1539     |              |              | <a href="mailto:planning@twp.beckwith.on.ca">planning@twp.beckwith.on.ca</a>       |
| Cassandra McGregor | Clerk/Emergency Information Officer | 613-257-1539     |              | 613-223-3922 | <a href="mailto:cmcgregor@twp.beckwith.on.ca">cmcgregor@twp.beckwith.on.ca</a>     |
| Glenn Rintoul      | Public Works/ alt. CEMC             | 613-257-1810     |              | 613-223-9675 | <a href="mailto:publicworks@twp.beckwith.on.ca">publicworks@twp.beckwith.on.ca</a> |
| Richard Kidd       | Reeve                               | 613-257-1539     |              | 613-223-8555 | <a href="mailto:rkidd@twp.beckwith.on.ca">rkidd@twp.beckwith.on.ca</a>             |
| Brian Dowdall      | Deputy Reeve                        |                  | 613-253-3614 |              | <a href="mailto:bdowdall@twp.beckwith.on.ca">bdowdall@twp.beckwith.on.ca</a>       |
| Ian Jackson        | Fire Chief                          | 613-257-1749     |              |              | <a href="mailto:fire@twp.beckwith.on.ca">fire@twp.beckwith.on.ca</a>               |
|                    |                                     | Fax 613-257-8996 |              |              |  |

**Township of Drummond / North Elmsley**

| Name  | Title                | Office           | Home          | Cell         | Email  |
|---|----------------------|------------------|---------------|--------------|--|
| Greg Saunders   | Fire Chief/CEMC      | 613-267-2596*3   | 613-264-1167  | 613-812-1067 | <a href="mailto:firechief@DNETV.ca">firechief@DNETV.ca</a>                     |
| Steve Fournier  | Reeve                |                  | 613-390-0812  | 613-390-0812 | <a href="mailto:stephenmfournier@outlook.com">stephenmfournier@outlook.com</a> |
| Ray Scissons  | Deputy Reeve         |                  | 613-283-2082  | 613-802-0907 | <a href="mailto:rayscissons@gmail.com">rayscissons@gmail.com</a>               |
| Scott Cameron   | Public Works Manager | 613-267-6500*250 | 613-283-9107  | 613-812-0468 | <a href="mailto:scameron@dnetownship.ca">scameron@dnetownship.ca</a>           |
| Cindy Halcrow   | Clerk Administrator  | 613-267-6500*220 | 613-256-8274  | 613-200-1097 | <a href="mailto:chalcrow@dnetownship.ca">chalcrow@dnetownship.ca</a>           |
| Cathy Ryder   | Deputy Clerk         | 613-267-6500*251 | 613-466-0750  | 613-200-0769 | <a href="mailto:cryder@dnetownship.ca">cryder@dnetownship.ca</a>               |
| Drummond/North Elmsley Municipal Office: 613-267-6500 |                      |                  | Fax: 267-2083 |              |  |
| Drummond Centre Municipal Garage: 613-267-2072        |                      |                  | Fax: 267-3911 |              |  |

**Township of Lanark Highlands**

| Name            | Title                                 | Office             | Home/Cell    | Email  |
|-----------------|---------------------------------------|--------------------|--------------|--|
| Darlene Plumley | CAO/Clerk                             | 613-259-2398 * 222 | 613-985-0112 | <a href="mailto:cao@lanarkhighlands.ca">cao@lanarkhighlands.ca</a>                 |
| Peter McLaren   | Reeve                                 | 613-259-2398 * 233 | 613-259-3139 | <a href="mailto:p.mclarenfarms@sympatico.ca">p.mclarenfarms@sympatico.ca</a>       |
| Bill King       | Deputy Reeve                          |                    | 613-278-0647 | <a href="mailto:billkingsagebrush@yahoo.ca">billkingsagebrush@yahoo.ca</a>         |
| Chad Kean       | Public Works Manager                  | 613-259-2398 * 239 | 613-264-7328 | <a href="mailto:publicworks@lanarkhighlands.ca">publicworks@lanarkhighlands.ca</a> |
| Gene Richardson | Fire Chief / CEMC                     | 613-259-2398 * 236 | 613-264-6241 | <a href="mailto:LHFirechief@lanarkhighlands.ca">LHFirechief@lanarkhighlands.ca</a> |
| Sarah Carroll   | Fire & Public Works Asst. / Alt. CEMC | 613-259-2398 * 242 | 613-812-3480 | <a href="mailto:envirofire@lanarkhighlands.ca">envirofire@lanarkhighlands.ca</a>   |
|                 |                                       | Fax 259-2291       |              |  |

**Township of North Frontenac**

| Name          | Title   | Office         | Home         | Cell     | Email  |
|---------------|---|----------------|--------------|----------|--|
| Eric Korhonen | CEMC/Director of Emergency Services /Fire Chief | 479-2231 * 232 | 479-2972     | 453-5400 | <a href="mailto:firechief@northfrontenac.ca">firechief@northfrontenac.ca</a> |
| Corey Klatt   | CAO   | 479-2231 * 221 | 343-363-9403 | 334-9156 | <a href="mailto:cao@northfrontenac.ca">cao@northfrontenac.ca</a>             |

|                |                      |                |          |          |  |
|----------------|----------------------|----------------|----------|----------|--|
| Darwyn Sproule | Public Works Manager | 479-2231 * 230 | 479-2252 | 334-0249 | <a href="mailto:publicworks@northfrontenac.ca">publicworks@northfrontenac.ca</a>             |
| Gerry Lichty   | Mayor                |                | 278-2381 | 390-1207 | <a href="mailto:mayorlichtynorthfrontenac@gmail.com">mayorlichtynorthfrontenac@gmail.com</a> |
| Gregg Wise     | Public Works Foreman | 479-2231 * 237 | 336-9150 | 334-0967 | <a href="mailto:pwf@northfrontenac.ca">pwf@northfrontenac.ca</a>                             |
|                |                      | Fax 479-2352   |          |          |  |

### Tay Valley Township

| Name                           | Title                | Office/Home       | Cell         | Email  |
|--------------------------------|----------------------|-------------------|--------------|--|
| Rob Rainer                     | Reeve                | 613-314-7755      |              |  |
| Fred Dobbie                    | Deputy Reeve         | 613-200-4922      |              |  |
| Sean Ervin                     | Public Works Manager | 613-267-5353*127  | 613-812-0755 | <a href="mailto:publicworksmanager@tayvalleytwp.ca">publicworksmanager@tayvalleytwp.ca</a> |
| Amanda Mabo                    | Clerk/Acting CAO     | 613-267-5353*130  |              | <a href="mailto:clerk@tayvalleytwp.ca">clerk@tayvalleytwp.ca</a>                           |
| Ashley Liznick                 | Treasurer            | 613-267-5353*126  |              | <a href="mailto:treasurer@tayvalleytwp.ca">treasurer@tayvalleytwp.ca</a>                   |
| Municipal Office: 613-267-5353 |                      | Fax: 613-264-8516 |              |  |

### COUNTY OF FRONTENAC

| Name           | Title | Office                | Cell         | Email  |
|----------------|-------|-----------------------|--------------|--|
| Jannette Amini | CEMC  | 613-948-9400 * 485302 | 613-985-6806 | <a href="mailto:cemc@frontenacounty.ca">cemc@frontenacounty.ca</a><br>or<br><a href="mailto:jamini@frontenacounty.ca">jamini@frontenacounty.ca</a> |

### COUNTY OF LANARK

| Name                     | Title                 | Office Ext.          | Cell         | Email  |
|--------------------------|-----------------------|----------------------|--------------|--|
| Megan Beson              | Deputy Clerk / CEMC   | 1102                 | 613-797-7917 | <a href="mailto:mbeson@lanarkcounty.ca">mbeson@lanarkcounty.ca</a>           |
| Terry McCann             | Public Works Director | 3190                 | 613-349-9456 | <a href="mailto:tmccann@lanarkcounty.ca">tmccann@lanarkcounty.ca</a>         |
| Peter McLaren            | Warden                | 1100                 | 613-390-2202 | <a href="mailto:p.mclarenfarms@sympatico.ca">p.mclarenfarms@sympatico.ca</a> |
| Kurt Greaves             | C.A.O                 | 1101                 | 613-200-0061 | <a href="mailto:cao@lanarkcounty.ca">cao@lanarkcounty.ca</a>                 |
| Municipal Office         |                       | 613-267-4200<br>2964 | Fax 613-267- |  |
| Engineering Building     |                       | 613-267-1353<br>2793 | Fax 613-267- |  |
| Public works after hours |                       | 613-267-1353         |              |  |

### COUNTY OF LENNOX & ADDINGTON

| Name                           | Title                                    | Office Ext.       | Home         | Cell         | Email  |
|--------------------------------|--|-------------------|--------------|--------------|--|
| Rob Burns                      | CEMC/Deputy Chief,<br>Emergency Services | 6002              | 613-530-0492 | 613-331-0126 | <a href="mailto:rburns@lennox-addington.on.ca">rburns@lennox-addington.on.ca</a>     |
| Henry Hogg                     | Warden                                   | 3223              | 613-336-0227 |              | <a href="mailto:warden@lennox-addington.on.ca">warden@lennox-addington.on.ca</a>     |
| Brenda Orchard                 | C.A.O.                                   | 3221              |              | 613-483-7989 | <a href="mailto:borchard@lennox-addington.on.ca">borchard@lennox-addington.on.ca</a> |
| Chris Wagar                    | Director, Infrastructure<br>Services     | 3230              | 613-372-3767 | 613-449-8808 | <a href="mailto:cwagar@lennox-addington.on.ca">cwagar@lennox-addington.on.ca</a>     |
| Municipal Office: 613-354-4883 |  | Fax: 613-354-7227 |              |              |  |

## MEDIA CONTACT LIST

| NEWSPAPERS                                  | TELEPHONE                     | FAX          | Email  |
|---|-------------------------------|--------------|--|
| The Humm                                    | 613-                          |              | <a href="mailto:editor@thehummm.com">editor@thehummm.com</a>                     |
| Carleton Place Canadian/<br>Almonte Gazette | 613-257-1303/<br>613-256-1311 | 613-257-7373 | <a href="mailto:akulp@metroland.com">akulp@metroland.com</a>                     |
| West Carleton Online                        | 613-623-6571                  |              | <a href="mailto:westcarletononline@gmail.com">westcarletononline@gmail.com</a>   |
| Lanark Era                                  | 613-259-2220                  | 613-259-3015 | <a href="mailto:lanarkera@primus.ca">lanarkera@primus.ca</a>                     |
| The Frontenac News                          | 613-279-3150                  | 613-279-3172 | <a href="mailto:info@frontenacnews.ca">info@frontenacnews.ca</a>                 |
| Perth Courier                               | 613-267-1100                  | 613-267-3986 | <a href="mailto:ljweir@metroland.com">ljweir@metroland.com</a>                   |
| Ottawa Citizen                              | 613-829-9100                  | 613-726-1198 | <a href="mailto:tspears@ottawacitizen.com">tspears@ottawacitizen.com</a>         |
| Ottawa Sun                                  | 613-739-5112                  | 613-739-8041 | <a href="mailto:Ottsun.city@sunmedia.ca">Ottsun.city@sunmedia.ca</a>             |
| Community Voice                             | 613-458-6423                  |              | <a href="mailto:emccracken@ottawavoice.ca">emccracken@ottawavoice.ca</a>         |
| Stittsville Central                         |                               |              | <a href="mailto:feedback@stittvillecentral.ca">feedback@stittvillecentral.ca</a> |

| OTTAWA AREA RADIO STATIONS                                     | TELEPHONE    | FAX          | Email  |
|--|--------------|--------------|--|
| Rogers Media (City News Ottawa; CHEZ JACK FM 92.3, KISS 105.3) | 613-736-2020 |              | <a href="mailto:Tips@ottawa.citynews.ca">Tips@ottawa.citynews.ca</a><br><a href="mailto:Doug.anderson@rci.rogers.com">Doug.anderson@rci.rogers.com</a> |
| Bell Media- Ottawa (BOB, MAJIC, CFRA, THE TEAM 1200)           | 613-789-2486 |              | <a href="mailto:news@cfra.com">news@cfra.com</a>   |
| CBC Ottawa   | 613-288-6000 | 613-288-6490 | <a href="mailto:ottawamorning@cbc.ca">ottawamorning@cbc.ca</a>   |
| LAKE 88  | 613-264-8811 | 613-264-1119 | <a href="mailto:news@lake88.ca">news@lake88.ca</a>   |
| The Jewel FM   | 613-241-9850 |              | <a href="mailto:news@985thejewel.com">news@985thejewel.com</a>   |
| My FM  | 613-623-9334 |              | <a href="mailto:news@myfmradio.ca">news@myfmradio.ca</a>   |
| CKCU   | 613-520-2898 |              | <a href="mailto:info@ckcufm.com">info@ckcufm.com</a>   |

| TV STATIONS              | TELEPHONE    | FAX            | Email  |
|--------------------------|--------------|----------------|--|
| CTV OTTAWA               | 613-224-1313 | 1-888-770-2192 | <a href="mailto:ottawanews@ctv.ca">ottawanews@ctv.ca</a>             |
| CTV OTTAWA (after hours) | 613-274-4337 |                |  |
| CBC                      | 613-288-6448 | 613-288-6490   | <a href="mailto:cbcnewsottawa@cbc.ca">cbcnewsottawa@cbc.ca</a>       |
| ROGERS 22 OTTAWA         | 613-728-2222 | 613-728-9793   | <a href="mailto:Ottawa22@rci.rogers.com">Ottawa22@rci.rogers.com</a> |

### Cottage Associations

|                                      |  |  |
|--------------------------------------|--|--|
| Dalhousie Lake Cottage Association   | Judy Hall  | <a href="mailto:halljw@sympatico.ca">halljw@sympatico.ca</a>   |
| Mazinaw Lake Cottage Association     | Amy Fraser   | <a href="mailto:mazinawamy@gmail.com">mazinawamy@gmail.com</a>   |
| Kashwakamak Lake Cottage Association | Sue MacGregor<br>Don Cory  | <a href="mailto:president@kashwakamak.ca">president@kashwakamak.ca</a><br><a href="mailto:dcory.site@gmail.com">dcory.site@gmail.com</a>   |
| Mississippi Lake Cottage Association | Rob Bell<br>Andre Langlois<br><br>Ed Carew                                   | <a href="mailto:president@mlakes.org">president@mlakes.org</a><br><a href="mailto:secretary@mlakes.org">secretary@mlakes.org</a><br><a href="mailto:ahlanglois@msn.com">ahlanglois@msn.com</a><br><a href="mailto:eccarew@gmail.com">eccarew@gmail.com</a> |
| Big Gull Cottage Association         | Ken Grant (east end)<br>Donna Commerford (east end)<br>Mike Smith (west end) | <a href="mailto:Kenwgrant@sympatico.ca">Kenwgrant@sympatico.ca</a><br><a href="mailto:donna.commerford@sympatico.ca">donna.commerford@sympatico.ca</a><br><a href="mailto:msmith4998@gmail.com">msmith4998@gmail.com</a>                                   |

## **Appendix IV – FLOOD PRONE AREAS**

### Lanark Village

Located on the Clyde River approximately 15 kilometers north of Perth on Highway 511. The potential for flooding in the Village of Lanark is due to three major reasons: several buildings are located within the natural floodplain of the Clyde River; the main street bridge does not have the capacity to pass high flows and creates a backwater effect; and there are no reservoirs to mitigate flows on the Clyde River.

### Clyde River including Cedardale

Several homes and cottages along the shores of the Clyde River from the outlet of Joe's Lake to the Village of Lanark are susceptible to flooding. Cedardale, a small cottage community on the Clyde River, approximately 15 kilometers north of Lanark, is slowly becoming a year round residential area. Most of the structures within the floodplain have been removed by the MVCA, however, it still has the potential for flooding problems from a Class 3 or greater flood.

### Crotch Lake to Dalhousie Lake

Flooding downstream of Crotch Lake can occur after heavy rains when the lake is at or near 240.00 MASL. When this happens, the weir is overtopped and flooding is observed through the Village of Snow Road and around the shoreline of Dalhousie Lake. Flooding can extend to Sheridan's Rapids on the Mississippi River.

### Innisville and Mississippi Lake

Innisville is located on the Mississippi River approximately 15 kilometers northeast of Perth on Highway 7. The river flows into Mississippi Lake and due to the set of rapids and the bridge abutments across the river, this area is subject to ice jams and minor flooding from backwater. Mississippi Lake is densely developed with both seasonal and year-round residences. Many of these residences are either partially or totally within the floodplain and are therefore subject to potential flooding during the spring freshet.

### Town of Carleton Place, Glen Isle and Appleton

Carleton Place is located at the outlet of Mississippi Lake on the Mississippi River. Some portions of the town along the river are subject to potential flooding since they are located within the natural floodplain of the river. Possible ice jams at the Bridge Street bridge can aggravate flood conditions.

Glen Isle is a year-round residential area immediately downstream of Carleton Place. Most of the structures in this neighbourhood are partially within the floodplain and are therefore subjected to flooding during average flood events.

Appleton is immediately down river of Glen Isle. Potential flooding in this village results mainly from ice jamming at the bridge and backwater effects from the generating station.

### Mississippi Mills (formerly Almonte and Pakenham)

Almonte is located on the Mississippi River approximately 15 kilometres downstream of Carleton Place. Flooding often occurs at the fairgrounds which are located within the floodplain. There is also potential for ice jams building at the Queen Street bridge.

Flooding caused by ice jams can also occur on the Indian River, located approximately 5 kilometers northwest of Almonte, especially at the Mill of Kintail Museum.

The Riverbend Trailer park, located upstream of Pakenham was built in the floodplain of the Mississippi River and experiences regular flooding.

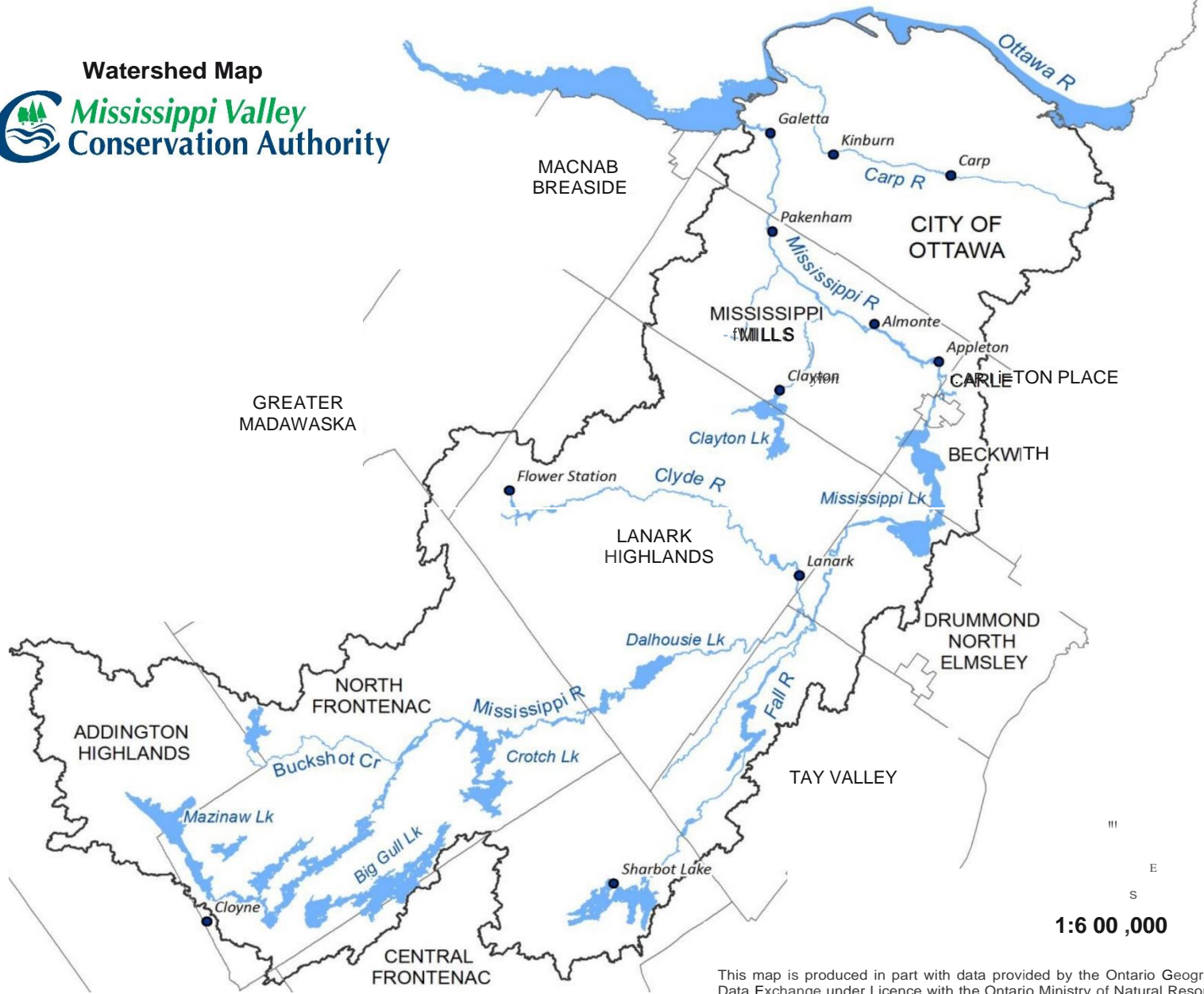
### Carp River

The Carp River is approximately 50 kilometres long and extends from Nepean to its outlet into the Ottawa River in Fitzroy Harbour. Flooding occurs in this river annually due to its limited channel capacity and lack of storage. Most of the area flooded is farmland, however, the river flows through the center of two villages, Carp and Kinburn, making them potential damage centers. Rural roads can be inundated by flood waters during the spring freshet.

### Ottawa River

The portion of the Ottawa River shoreline which lies within the jurisdiction of the MVCA extends from Marshall Bay to Shirley's Bay. The main problem area associated with flooding along this stretch of the river is in Constance Bay. The flooding along the Ottawa River usually occurs when heavy rainfall and moderate to high winds coincide with the spring freshet after the upper reservoirs are full.





This map is produced in part with data provided by the Ontario Geographic Data Exchange under Licence with the Ontario Ministry of Natural Resources and the Queen's Printer for Ontario, 2015